

Features

- Features a fabric weight of 2.19 oz./sq. yd., providing 64% more fabric when compared to the average 2.3-2.5 oz./sq. yd. of competing garments.
- Reliable continuity to 100 washings if manufacturer guidelines are followed
- Complete with yellow static-barrier label and laundry instructions
- Embroidery or sublimation printing is available in many colors
- Standard sizes available from XS-9XL
- Custom sizes available; allow 3-4 weeks

Specifications

- Garment performs to 10^{6-7} Ohms/sq. yd. at 41% RH
- Snaps included in both armpits
- Meets ANSI-ESD S20.20-2014 guidelines
- Compatible with Cleanroom Class 100,000 (ISO Class 8) environments

Laundering Instructions

Launder garment in cool or warm water using a neutral liquid detergent. Detergent must be surfactant, bleach and softener free. Tumble dry low heat or hang to dry. Garment will dry rapidly. Do not iron.



Jacket

Lab Coat



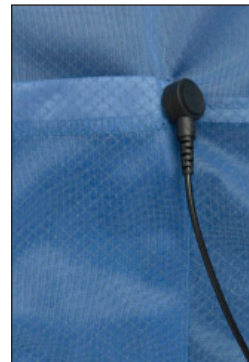
Knit Cuff



Snap Cuff



Short Sleeve



Hip Snap

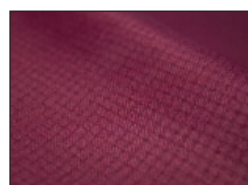


ESD Tag

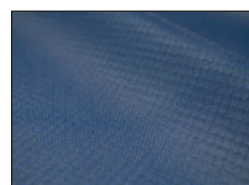
Garment Colors
Call for additional
embroidery colors.



Black



Burgundy

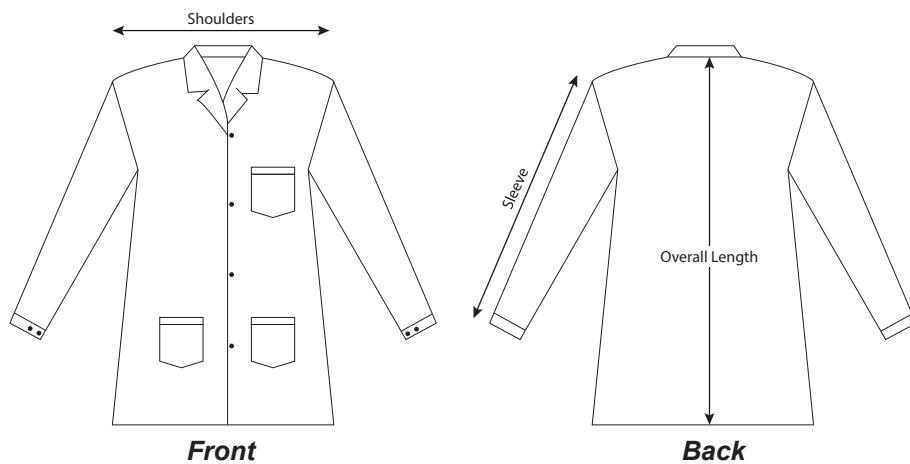


Royal Blue



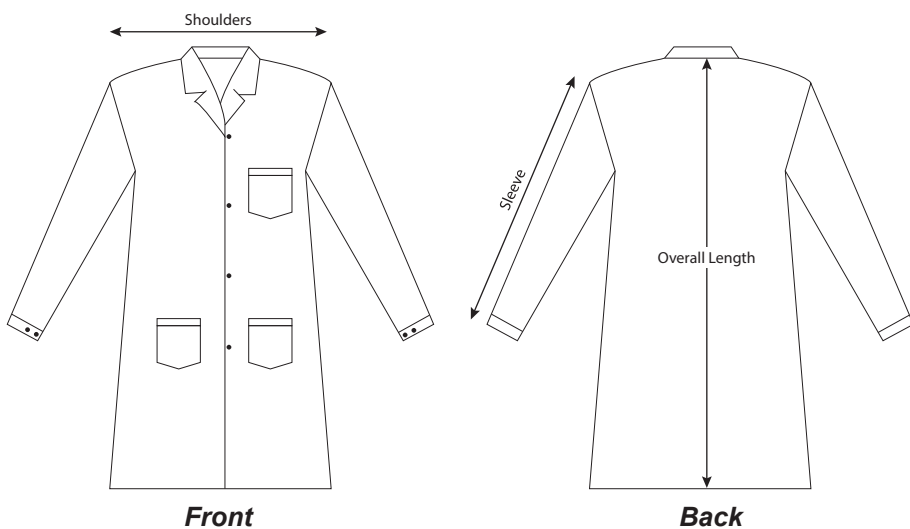
White

Specifications



Jacket Size Chart (Tolerance $\pm 0.39"$)

Measurement	XS	S	M	L	XL	2XL	3XL	4XL	5XL	6XL	7XL	8XL	9XL
Overall Length	30"	30.5"	30.5"	30.5"	31"	31.25"	32"	32.25"	33"	33"	33"	33.5"	33.5"
Shoulders	17.5"	18"	19"	20.25"	21.25"	23.5"	25.5"	26.5"	27.75"	28.75"	30.5"	31.75"	33.25"
Sleeve	18.75"	23.5"	24.25"	24.25"	24.25"	24.5"	25"	25.25"	25.25"	25.5"	25.5"	26"	26"



Jacket Size Chart (Tolerance $\pm 0.39"$)

Measurement	XS	S	M	L	XL	2XL	3XL	4XL	5XL	6XL	7XL	8XL	9XL
Overall Length	37"	37"	37.5"	37.5"	38"	38.25"	39"	39.25"	40"	40"	40"	40.5"	40.5"
Shoulders	17.5"	18"	19"	20.25"	21.25"	23.5"	25.5"	26.5"	27.75"	28.75"	30.5"	31.75"	33.25"
Sleeve	18.75"	23.5"	24.25"	24.25"	24.25"	24.5"	25"	25.25"	25.25"	25.5"	25.5"	26"	26"